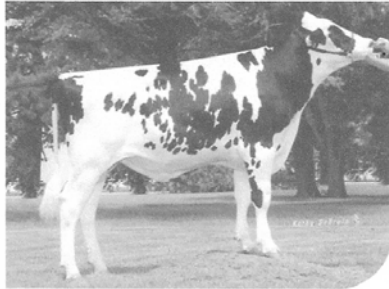


SEPTEMBER 2010



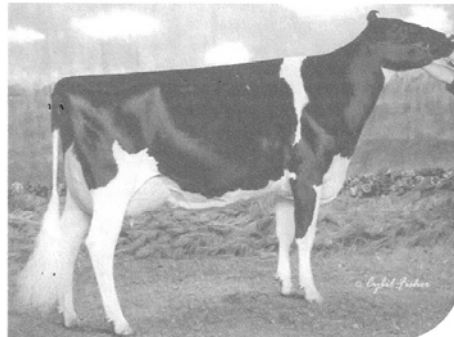
0200HO09901
CLAYTON-CREST
ACE

Shottle x Goldwyn x Durham

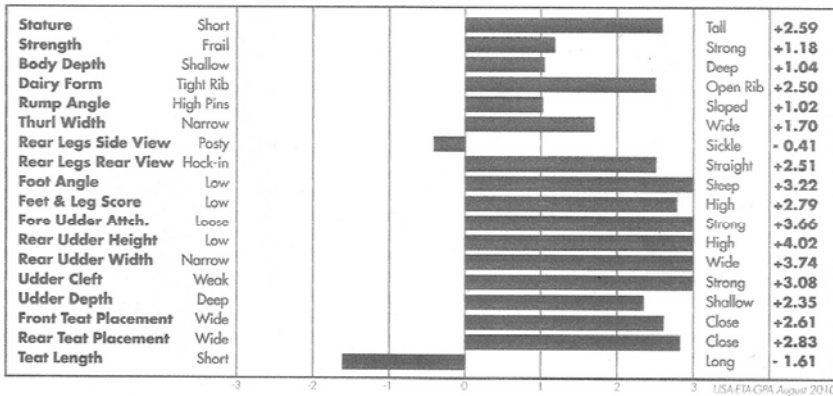
- One of the more exciting Premier™ sires tested this year
- Sensational potential; +2199GTPI and \$588NM
- Currently, this family dominates the high ranking genomic lists



Dam: Allyndale-I Goldwyn Avery



Grandam: MD-Delight Durham Atlee



G-PARENT AVERAGE